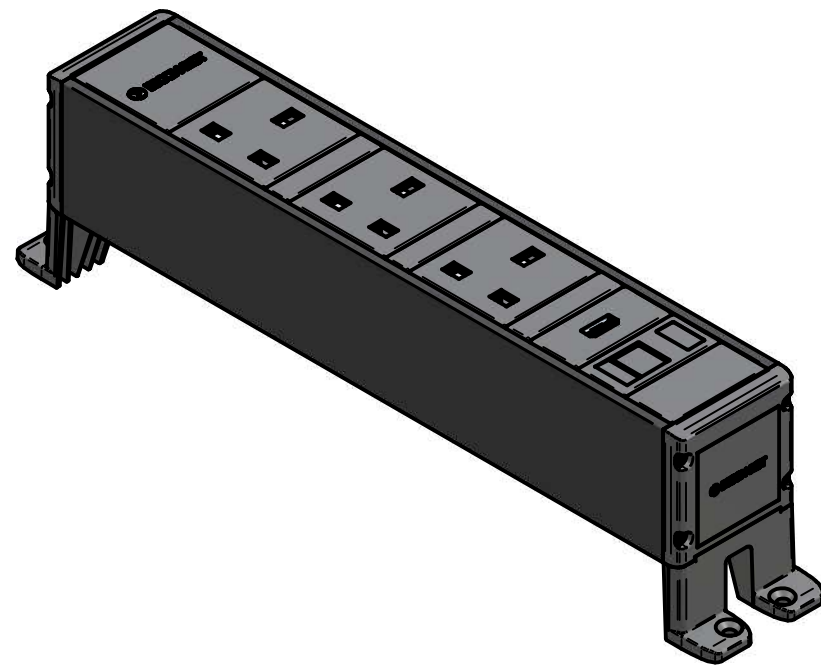



toma de tierra



Nota:

| TOLERANCIAS LIBRES DE MAGNITUDES LINEALES - DIN-7168 - (mm) | | | | | |
|---|-------|--------|----------|-----------|------------|
| ACABADO | > 6 | 6 > 30 | 30 > 100 | 100 > 300 | 300 > 1000 |
| GRADO MEDIO | ± 0,1 | ± 0,2 | ± 0,3 | ± 0,5 | ± 0,8 |

| | | | | | |
|---|---|---------------|-------------|---|---------------|
|  | IBCONNECT | | | 33103001B3 3TBN-USB-PD.dft | |
| | Pol. Ind. El Escopar, Nº 5 - 31350 - Peralta (Navarra) - España / Tel. : 948 753282 / Fax : 948 751 462 e-mail : dmolviedro@ib-connect.com | | | | |
| | Dibujado | DMolviedro | | | Observaciones |
| | Fecha | 7 - 12 - 2011 | Revisión nº | | |
| ESCALA | | | | | |
| Nº P.: | | | | | |
| N.Ar.:33103001B3 3TBN-USB-PD.dft | | | | | |